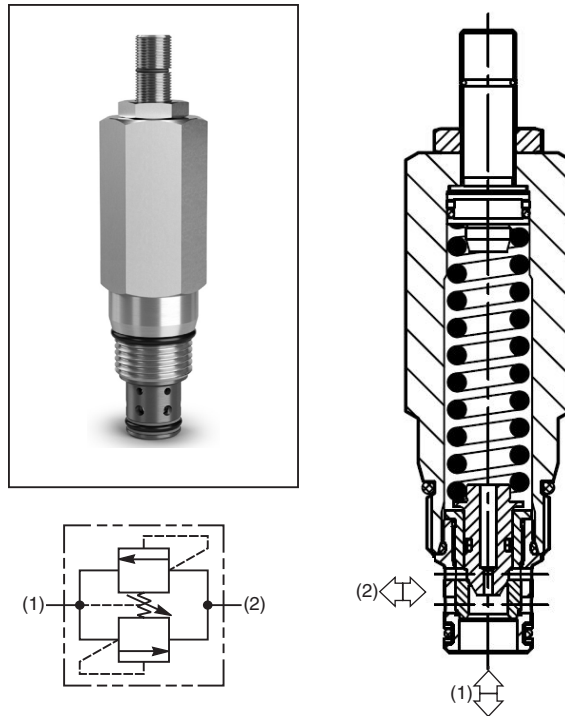


General Description

Direct Acting, Dual Poppet-Type, Cross-over Relief Valve.
 For additional information see Technical Tips on pages PC3-PC7.

Features

- Compact space saving design
- Cost effective - only requires one cavity
- Poppet-type construction for lower leakage
- Full 350 Bar, 5000 PSI pressure capability
- High flow capability for the size of valve
- Minimal pressure variation with flow change
- Hardened working parts for maximum durability
- All external parts zinc plated



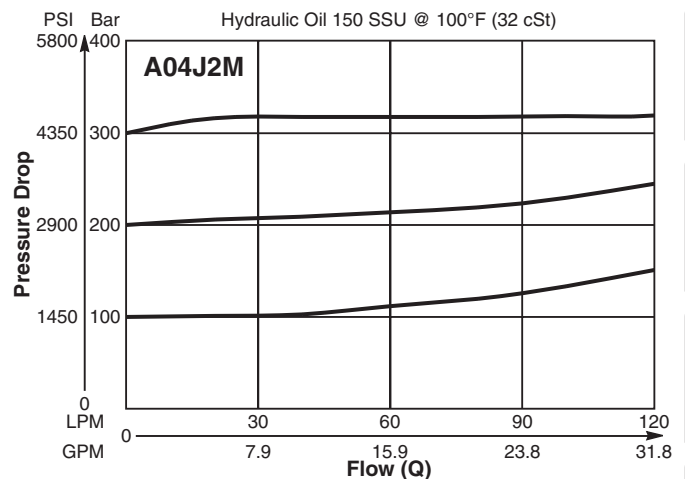
Specifications

Rated Flow	120 LPM (32 GPM)
Maximum Inlet Pressure	M- 10-350 Bar (144-5000 PSI)
Maximum Pressure Setting	350 Bar (5000 PSI)
Sensitivity: Pressure/Turn	M- 34 Bar (493 PSI)
Maximum Tank Pressure	350 Bar (5000 PSI)
Leakage at 150 SSU (32 cSt)	10 drops/min. @100 Bar (1450)
Cartridge Material	All parts steel. All operating parts hardened steel.
Operating Temp. Range/Seals	-34°C to +121°C (Nitrile) (-30°F to +250°F) -26°C to +204°C (Fluorocarbon) (-15°F to +400°F)
Fluid Compatibility/Viscosity	Mineral-based or synthetic with lubricating properties at viscosities of 45 to 2000 SSU (6 to 420 cSt)
Filtration	ISO-4406 18/16/13, SAE Class 4
Approx. Weight	0.29 kg (0.64 lbs.)
Cavity	C10-2 (See BC Section for more details)

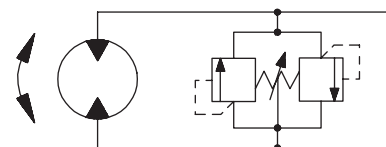
Performance Curves

(Pressure rise through cartridge only)

Flow vs. Inlet Pressure 1 to 2 and 2 to 1



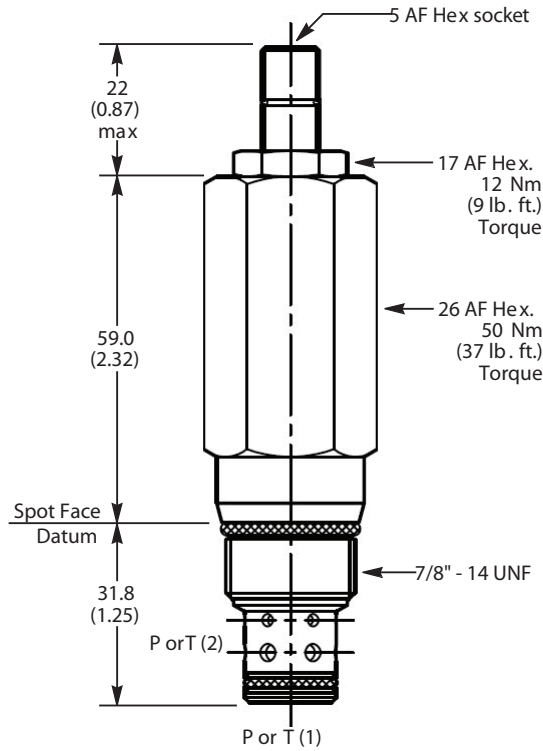
Application



Motor protection in both directions

- CV**
Check Valves
- SH**
Shuttle Valves
- LM**
Load/Motor Controls
- FC**
Flow Controls
- PC**
Pressure Controls
- LE**
Logic Elements
- DC**
Directional Controls
- SV**
Solenoid Valves
- PV**
Proportional Valves
- CE**
Coils & Electronics
- BC**
Bodies & Cavities
- TD**
Technical Data

Dimensions Millimeters (Inches)



Ordering Information

A04J2	M	Z	N
10 Size Direct Acting Relief Valve	Pressure Adjustment Range	Adjustment Style	Seals

Highlighted represents preferred options that offer the shortest lead times. Other options may be available, but at extended lead times.

Code	Pressure Range
M	10 - 350 Bar (144 - 5000 PSI)

Standard Pressure Setting
A04J2M Standard Setting: 200 Bar (2900 PSI) @ 15 LPM (4.0 GPM)

Code	Adjustment Style
Z	Screw Adjust

Code	Seals
N	Nitrile

Order Bodies Separately
 See section BC

B10	—	2	—	8T
10 size		2-Way Cavity		Port Size

Code	Porting / Body Material
8T	SAE-8 / Steel (5000 PSI)

Kit	Part Number
Knob	ASV014975
Tamper Resistant Cap	TC1130
Nitrile Seal	SK30529N-1
Fluorocarbon Seal	SK30529V-1

CV
Check Valves
SH
Shuttle Valves
LM
Load/Motor Controls
FC
Flow Controls
PC
Pressure Controls
LE
Logic Elements
DC
Directional Controls
SV
Solenoid Valves
PV
Proportional Valves
CE
Coils & Electronics
BC
Bodies & Cavities
TD
Technical Data